

Package Included

No	Descriptions	Quantity
01	Dish	1x
02	Feeding Unit	1x
03	Antenna Mount Part -1	1x
04	Antenna Mount Part - 2	1x
05	Pole Mount Clamp -1	2x
06	Pole Mount Clamp -2	2x
07	M8 Washer	8x
08	M8 x 80mm Screw	4x
09	M8 x 15mm Screw	8x
10	M8 Flaşlı Nut	4x
11	M6 Washer	10x
12	M6 x 50mm Screw	4x
13	Cylinder Booster	4x
14	M6 x15mm Screw	2x
15	M6x20mm Screw	4x
16	Radio Mounting Bracket	1x



ANT- 6031N



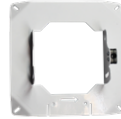
01

Dish



02

Feeding Unit



03

Antenna Mount
Part -1



04

Antenna Mount
Part -2



05

Pole Mount
Clamp -1



06

Pole Mount
Clamp -2



07

M8 Washer



08

M8x80mm
Screw x4



09

M8x15mm
Screw x8



10

M8
Nuts x4



11

M6 Washer



12

M6x50mm
Screw x4



13

Cylinder
Booster x4



14

M6x15mm
Screw x2



15

M6x20mm
Screw x4



16

Radio
Mounting
Bracket



6031N Product Info



6031N Guide



+90 212 465 0 621
+90 212 672 32 05



sales@deltalink.com.tr
www.deltalink.com.tr



Istanbul Ataturk Havalimani, Serbest Bolgesi Plaza,
Office No.318 , Yesilkoy, Istanbul, Turkey

Orhan Gazi Mah , Mimsan Sanayi Sitesi , 1730 Sk ,
No:36, Bahcesehir, Esenyurt, Istanbul, Turkey

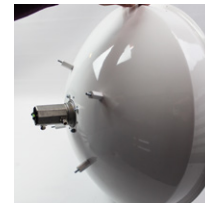
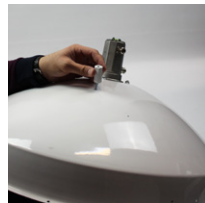
01

In the supply assembly, the antenna will be mounted with the M6 x 20mm bolt and M6 nut, with the water drainage holes of the antenna facing down, and the arrow mark on the scale facing



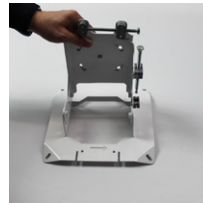
02

M6x30mm long screws are inserted from inside to outside through 4 holes prepared in the antenna and fixed by screwing to the riser cylinders in return.



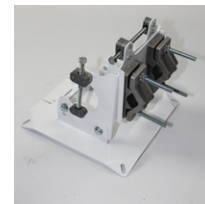
03

The screws of the lower round apparatus are loosened and separated, the iron mounting feet with the adjustment screws are passed through the twisting part and fixed using M8x15mm screws, the vertical adjustment screw is



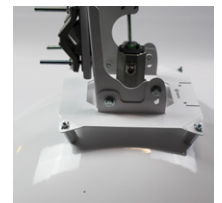
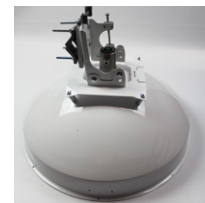
04

M8x80mm screws are inserted into the slot by passing through the top and bottom holes, the connection piece is fixed to the holes on the iron apparatus by using M8x15mm screws and nuts.



05

The cylindrical risers on the bowl are fixed with M6 nuts, with the arrow on the pole connecting piece pointing upwards. It is fixed with M8 nut by attaching the counter during the pole connection.



06

Ready to Install



Part Placement (Assembly Expansion)

